



Technical Information

S1250-S1320

HMF Z001243



	Rev.	No.
<u>Series 1250</u>		
Technical data	16-08-06	31 6310
Lifting capacity diagram, 1253-K1	01-11-96	31 6320
Lifting capacity diagram, 1253-K2	01-06-97	31 6321
Lifting capacity diagram, 1253-K3	01-06-97	31 6322
Lifting capacity diagram, 1253-K4	01-06-97	31 6323
Manual Extensions, K2, K3, K4	01-06-97	31 6333
Lifting Capacity at Various Boom Positions, 1253 K2	01-06-97	31 6336
Lifting Capacity at Various Boom Positions, 1253 K3	01-06-97	31 6337
Lifting Capacity at Various Boom Positions, 1253 K4	01-06-97	31 6338
Dimension sketch	16-08-06	31 6340
Lifting Height at Crane Pillar	01-11-96	31 6341
Dimension sketch, swing-up stab. Single and double extension	01-11-96	31 6351
Stabilizer cylinders	01-06-99	31 6352
Dimension sketch, stand up controls - HS 4	01-11-96	31 6360
Dimension sketch, top seat- TS 7	01-11-96	31 6361
Centres of gravity	01-11-96	31 6375
<u>Series 1320</u>		
Technical data	01-06-98	31 63210
Lifting capacity diagram, 1323-K1	01-06-98	31 63220
Lifting capacity diagram, 1323-K2	01-06-98	31 63221
Lifting capacity diagram, 1323-K3	01-06-98	31 63222
Lifting capacity diagram, 1323-K4	01-06-98	31 63223



Performance	Unit	1253-K1	1253-K2	1253-K3	1253-K4
Load moment	tm	12,3	12,0	11,6	11,3
Hydraulic reach	m	6,3	8,0	10,0	11,9
Hydraulic telescopic movement	mm	1750	3500	5350	7200
Reach with manual extensions	m	-	9,8	13,8	13,7
Lifting capacity, hydraulic	kg-m	2800 - 4,4 2000 - 6,2	2710 - 4,4 1910 - 6,2 1480 - 7,9	2570 - 4,5 1790 - 6,3 1360 - 8,0 1100 - 9,9	2450 - 4,6 1680 - 6,4 1260 - 8,1 1000 - 10 835 - 11,8
Lifting capacity, manual extensions	kg-m	-	1130 - 9,7	860 - 11,8 720 - 13,7	720 - 13,6
Slewing torque	kgm	1600	1600	1600	1600
Slewing angle	degrees	410	410	410	410
Max. heel at max. load moment	degrees	4	4	4	4

Measures

Height above chassis when	mm	2227	2227	2227	2227
Width when folded	mm	2430	2430	2430	2490
Length, without extra valves*	mm	800	800	800	800
Length, with extra valves*	mm	880	880	880	880
Stabilizer spread, standard	mm	4665	4665	4665	4665
Stabilizer spread, double ext.	mm	5700	5700	5700	5700

Working speeds

Slewing speed	degrees/s	24	24	24	24
Lifting speed at max. reach	m/s	1,00	1,15	1,15	1,35

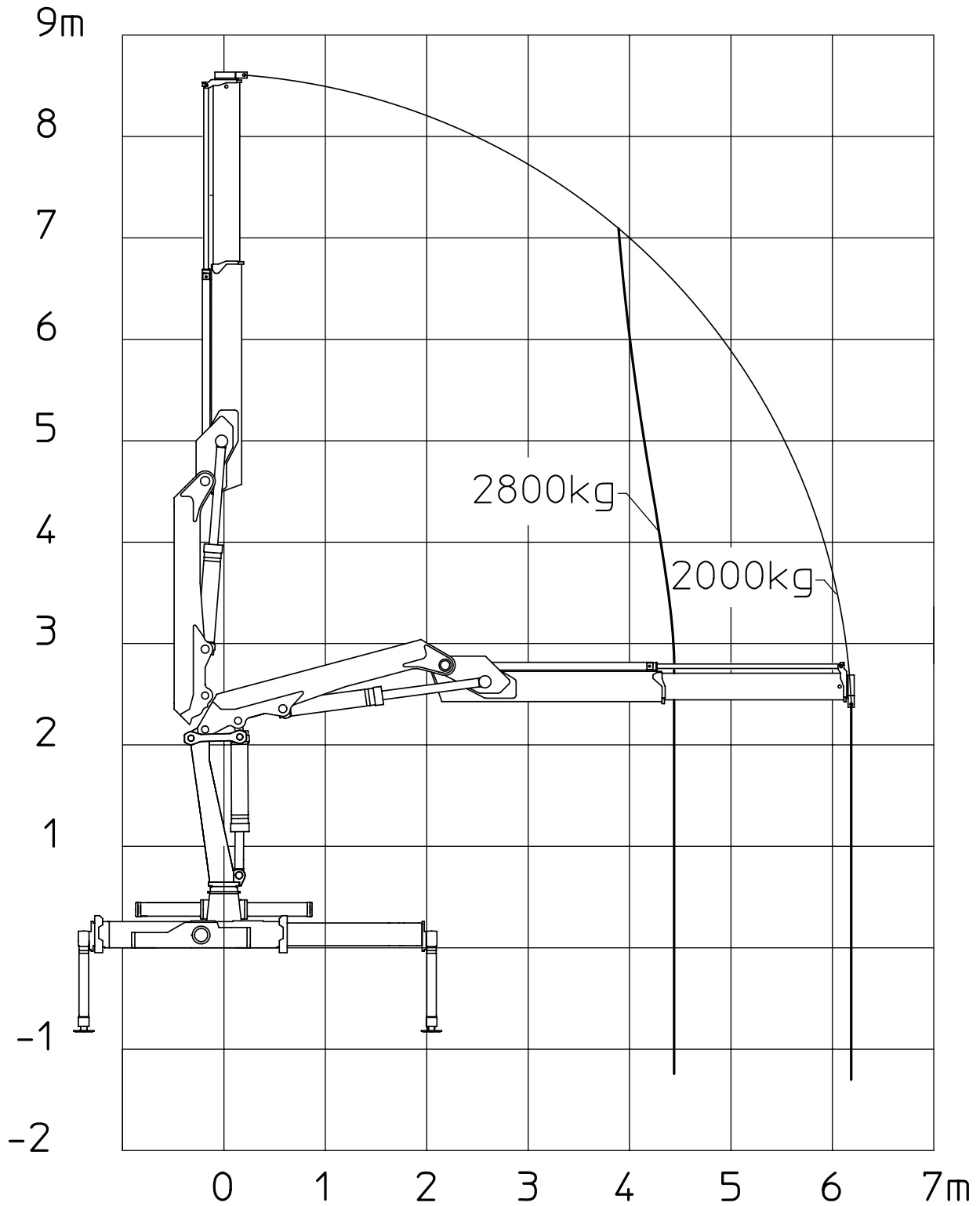
Weights

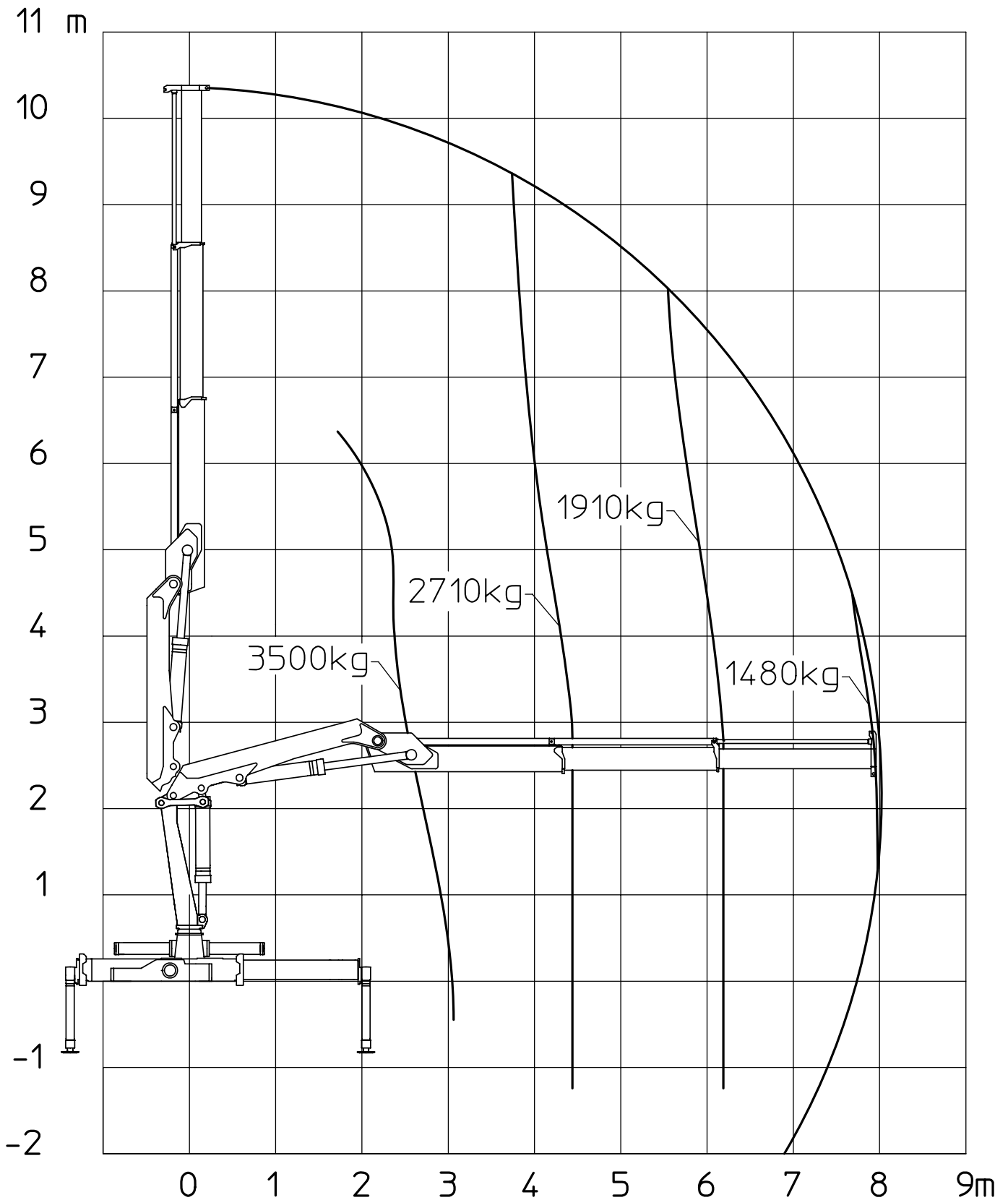
Standard loader, excl. stab. legs	kg	1510	1620	1745	1860
Stabilizer legs, standard	kg	196	196	196	196
Stabilizer legs, double ext.	Kg	340	340	340	340
Mounting bolts	kg	53	53	53	53
Oil in base	kg	31	31	31	31

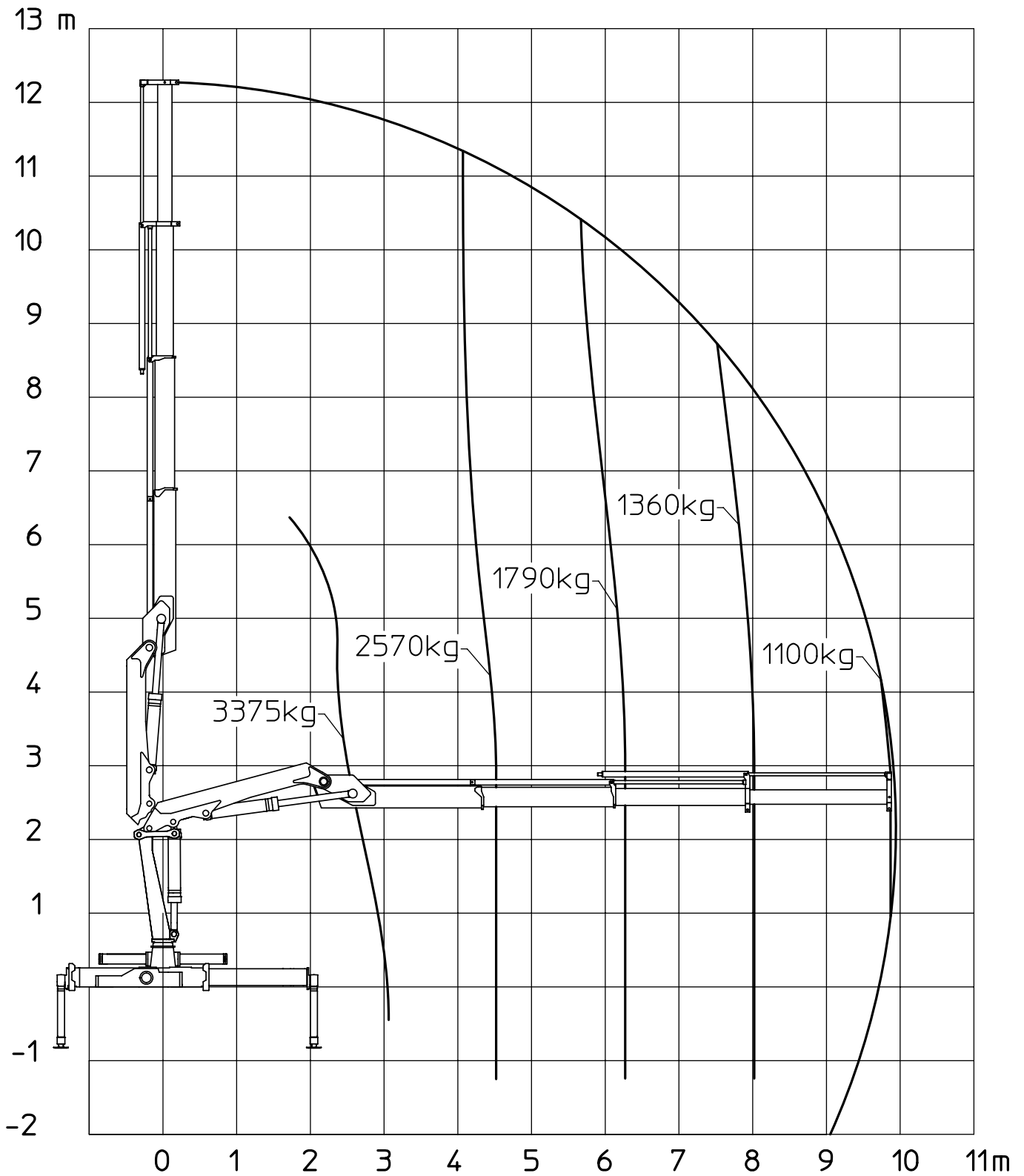
Power consumption / pump performance

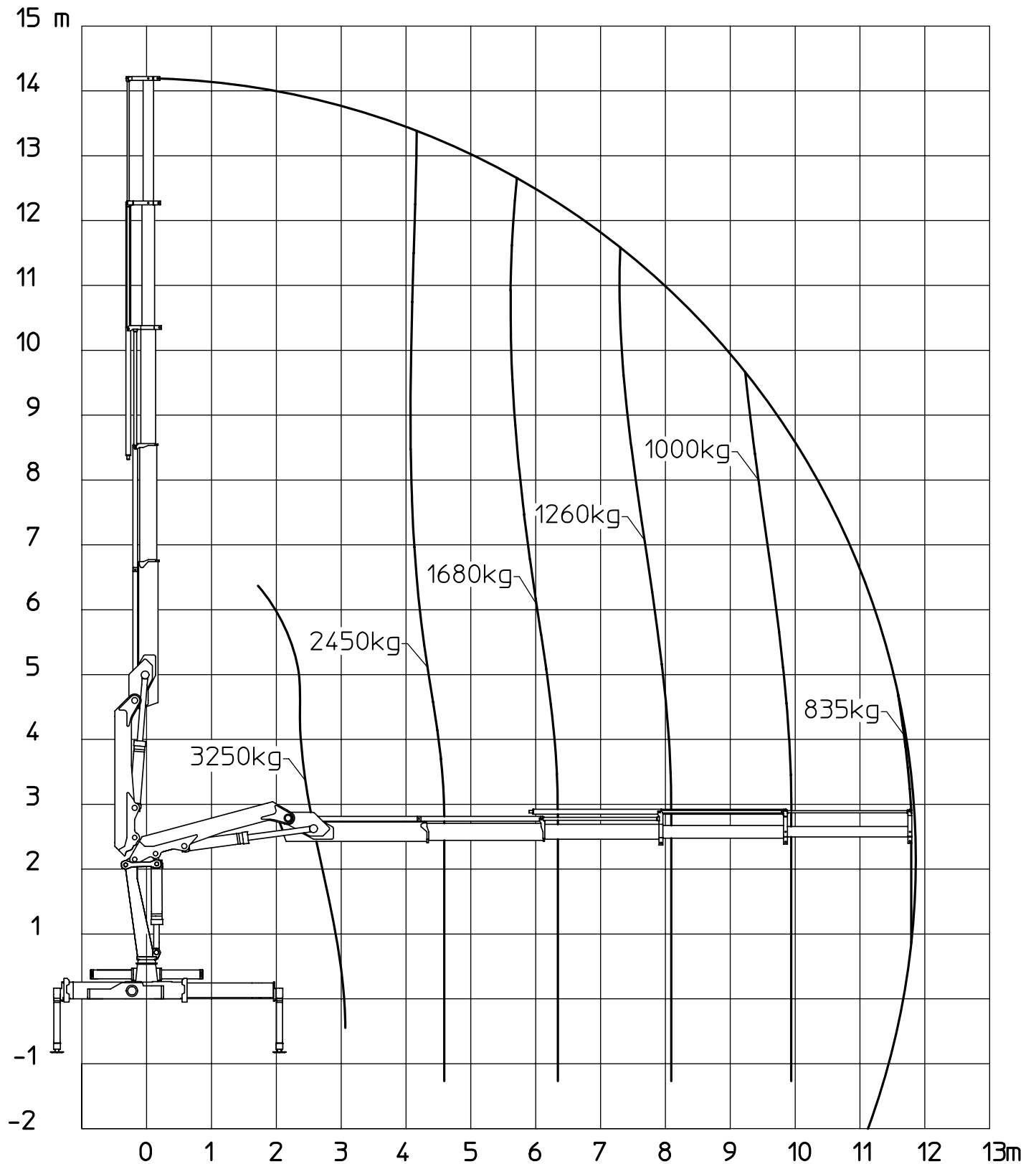
Working pressure	MPa	26,5	26,5	26,5	26,5
Pump performance	l/min	50	50	50	50
Power consumption	Kw	20	20	20	20
Oil capacity in base	l	37	37	37	37
Oil capacity in separate tank	l	70	70	70	70

* Dimensions depending on equipment, please see dimension sketch.











Mauelle forlængerarme, K2, K3, K4

Side:
Page: 1 (1)

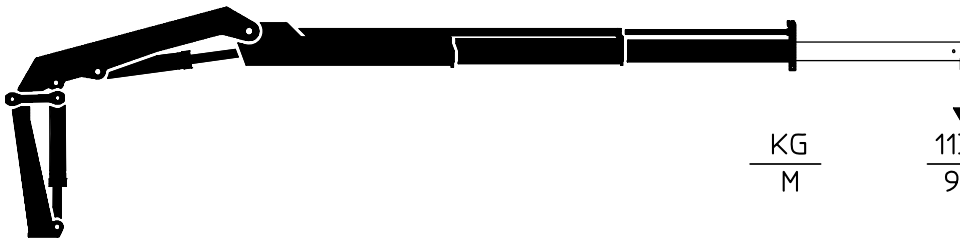
Manual Extensions, K2, K3, K4

Date:
Datum: 01.06.97

Manuellen Verlängerungen, K2, K3, K4

No.	62 44 520
Dim.	198 / 98

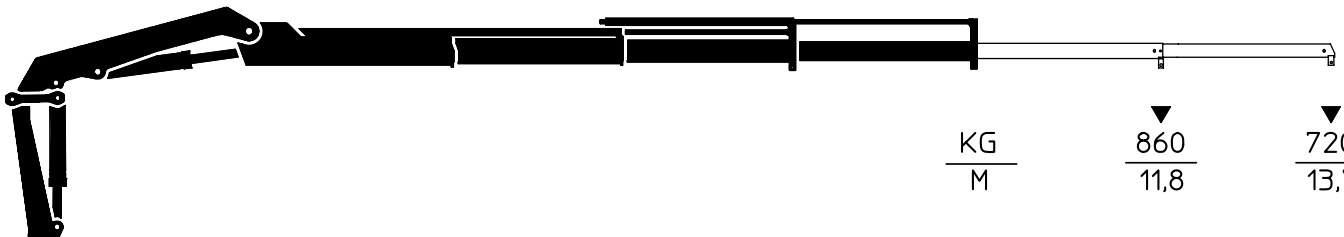
1253 K2



KG	1130
M	9,7

No.	62 44 510	62 44 500
Dim.	164 / 80	140 / 63

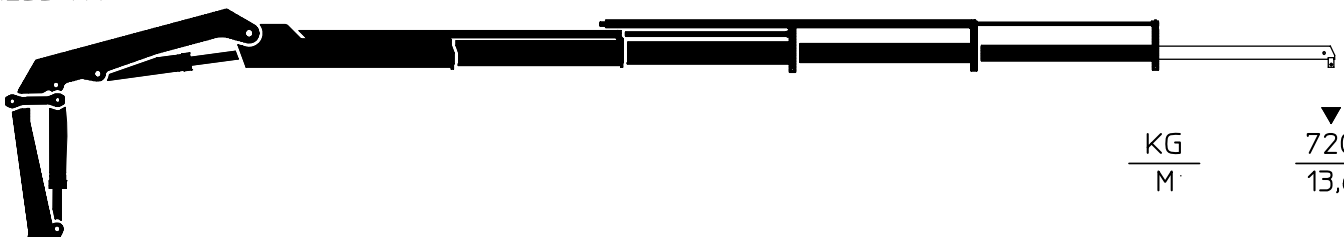
1253 K3



KG	860	720
M	11,8	13,7

No.	62 44 500
Dim.	140 / 63

1253 K4



KG	720
M	13,6

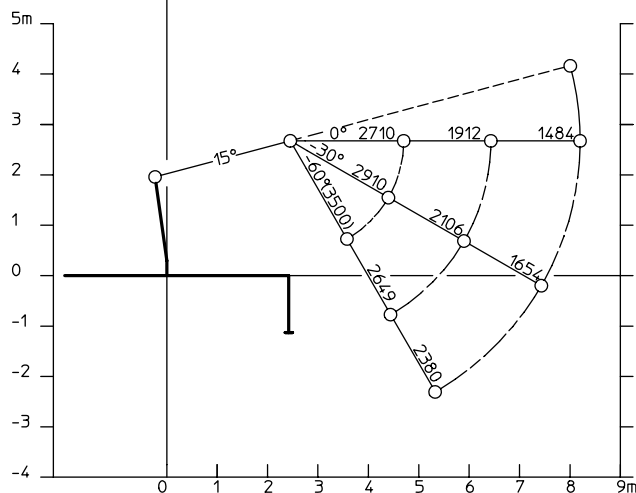
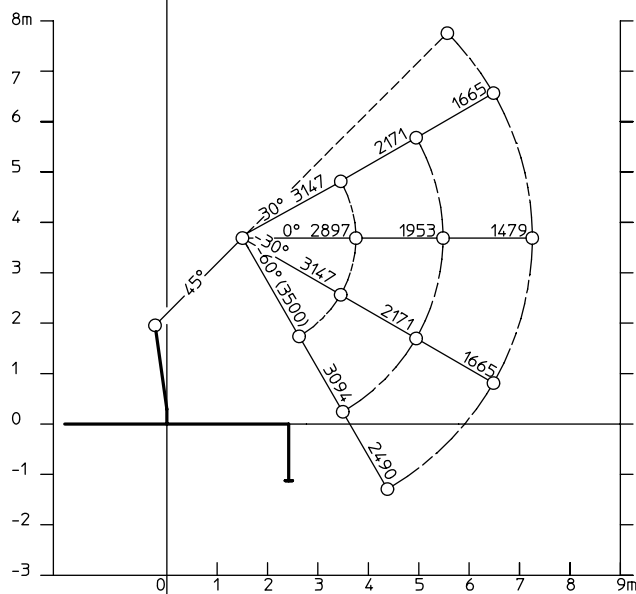
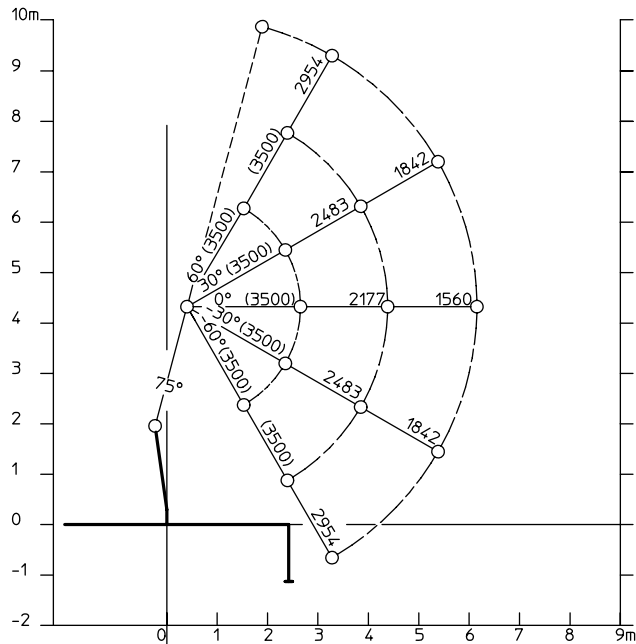
De angivne belastninger må ikke overskrides.
Les charges indiquées ne doivent pas être dépassées.
The loads stated, must not be exceeded.
Los límites indicados no deben excederse.
Die angegebenen Belastungen dürfen nicht überschritten werden.



Løfteevne ved varierende armstillinger, 1253 K2
Lifting Capacity at Various Boom Positions, 1253 K2
Tragkraft bei Verschiedenen Armstellungen, 1253 K2

Side: 1 (1)

Date: 01.06.97



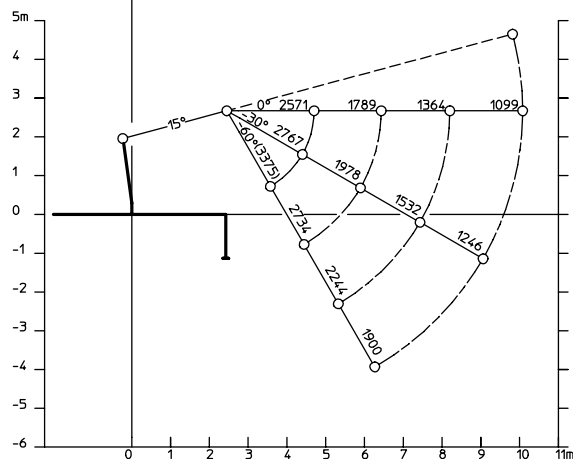
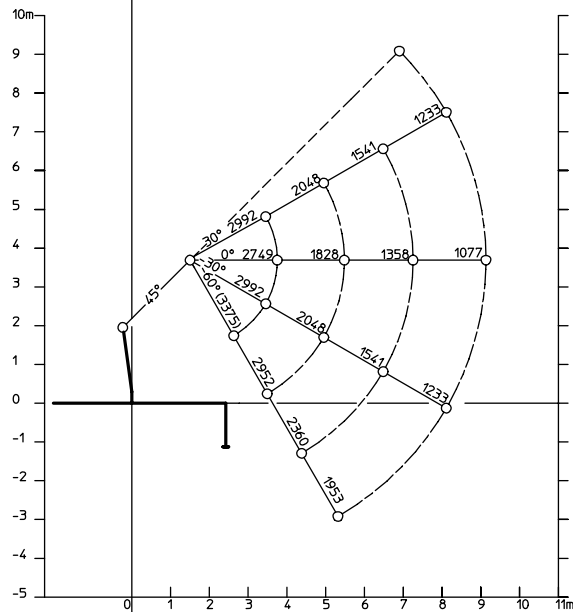
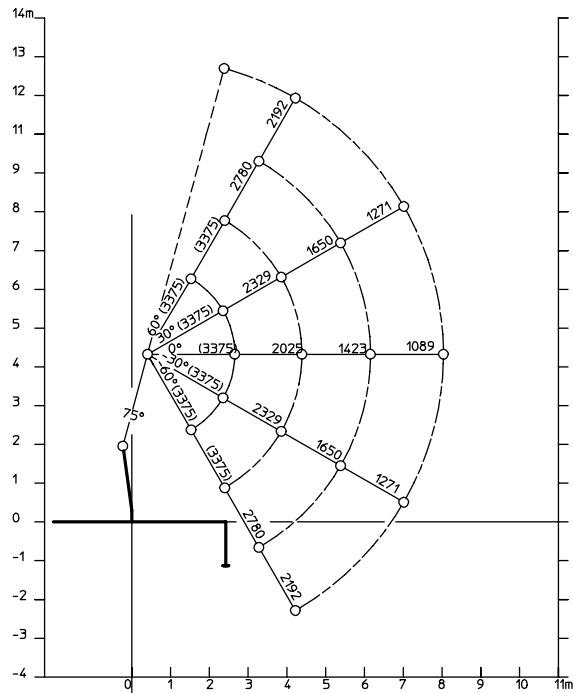


TECHNICAL INFORMATION, SERIES 1250

3 1 6337

Løfteevne ved varierende armstillinger, 1253 K3
 Lifting Capacity at Various Boom Positions, 1253 K3
 Tragkraft bei verschiedenen Armstellungen, 1253 K3

Side: 1 (1)
 Page: 1 (1)
 Date: 01.06.97
 Datum: 01.06.97

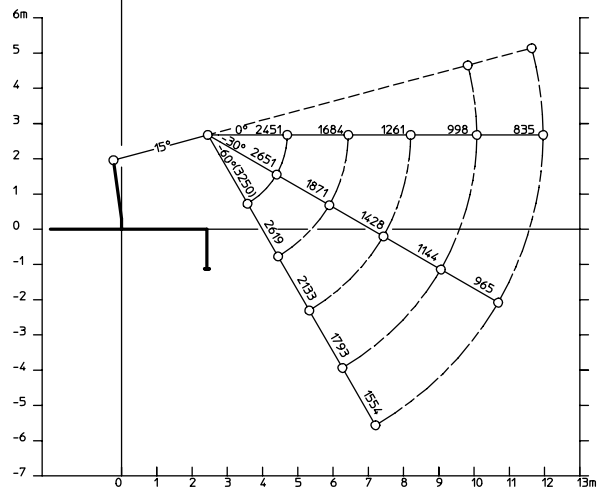
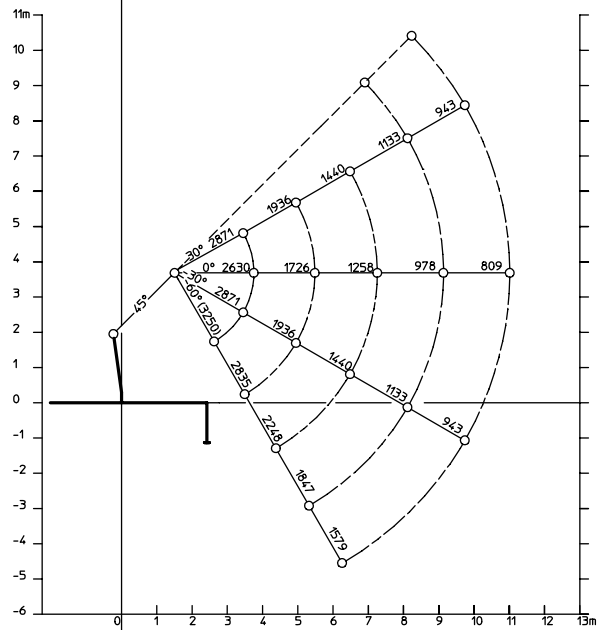
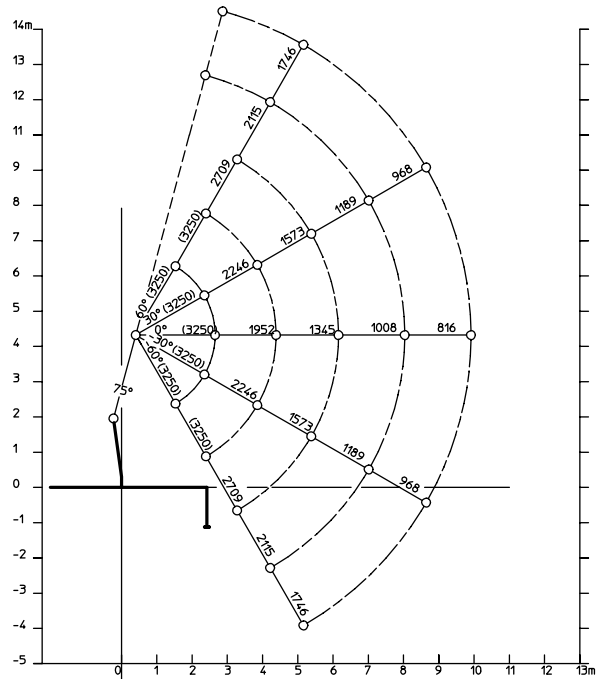


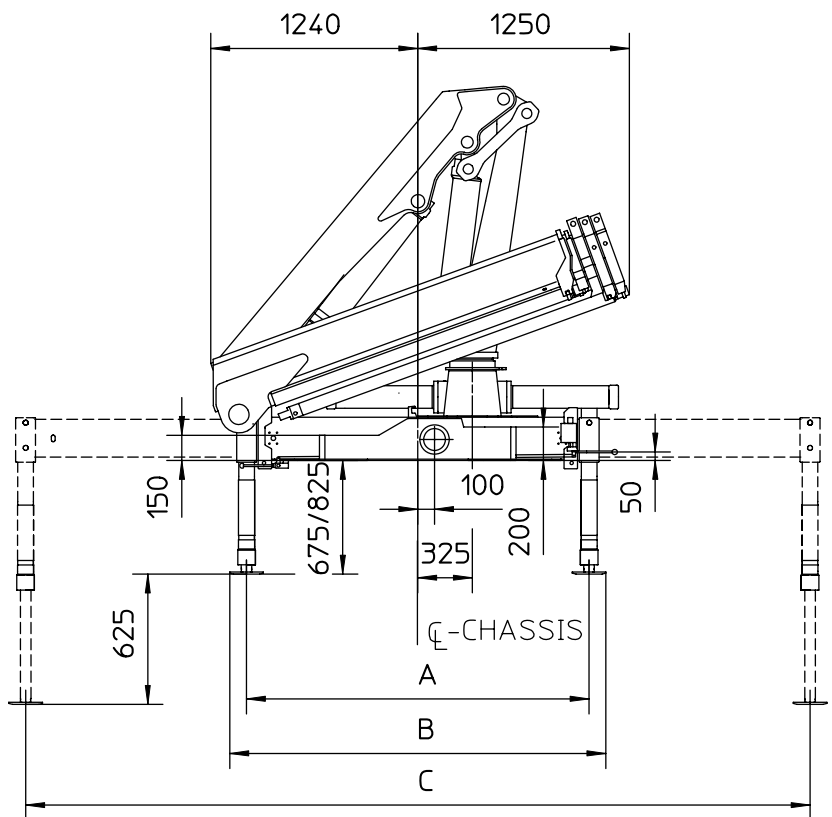
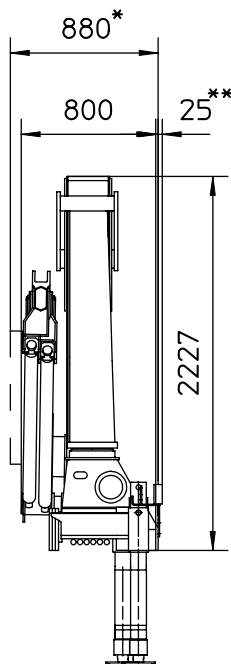
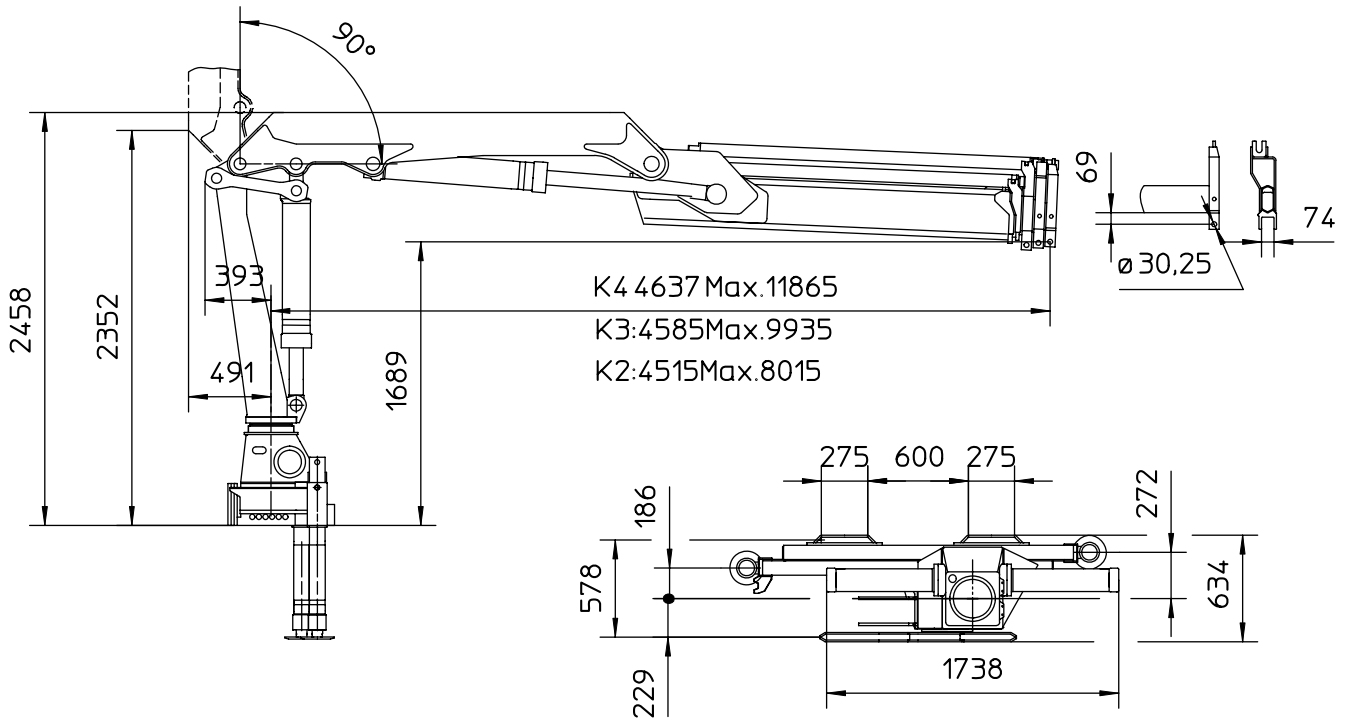


Løfteevne ved varierende armstillinger, 1253 K4
 Lifting Capacity at Various Boom Positions, 1253 K4
 Tragkraft bei verschiedenen Armstellungen, 1253 K4

Side:
 Page: 1 (1)

Date:
 Datum: 01.06.97

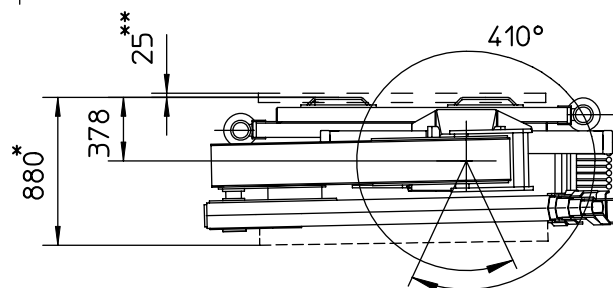




	SV	SR	DR	Hydr.ext.S
A	2035	2125	2265	
B	2235	2325	2465	
C	4665	4755	5700	4435

*Inkl. ekstraventiler/Incl. extra valves
Einschl Zusatzventile

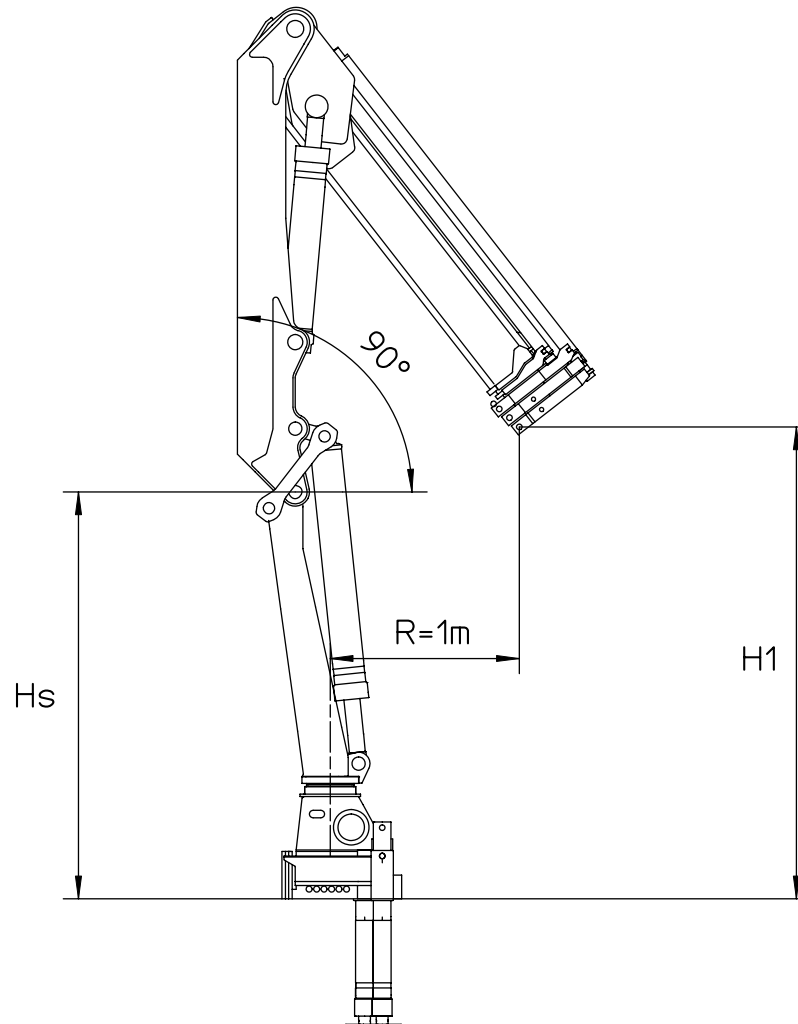
**Tillægslængde ved hydrauliske udskydelige
støttebensbomme, dobbelte.
Extra length, hydraulically extensible
stabilizer beam, double.
Zusätzliche Länge bei hydr.auszehbaren
Auszugskästen, dob.





Løftehøjde ved søjle
Lifting Height at Crane Pillar
Hubhöhe an der Säule

Side:
Page: 1 (1)
Seite:
Date:
Datum: 01.11.96



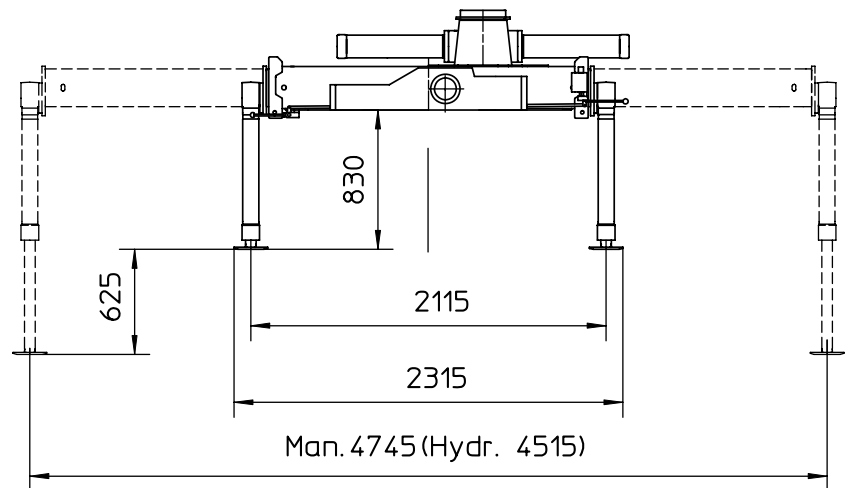
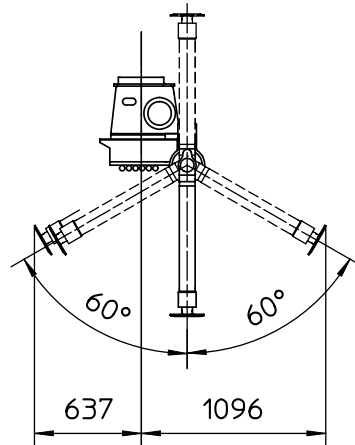
	Hs	H1
S1250K1	2,15m	2,70m
S1250K2	2,15m	2,65m
S1250K3	2,15m	2,57m
S1250K4	2,15m	2,50m



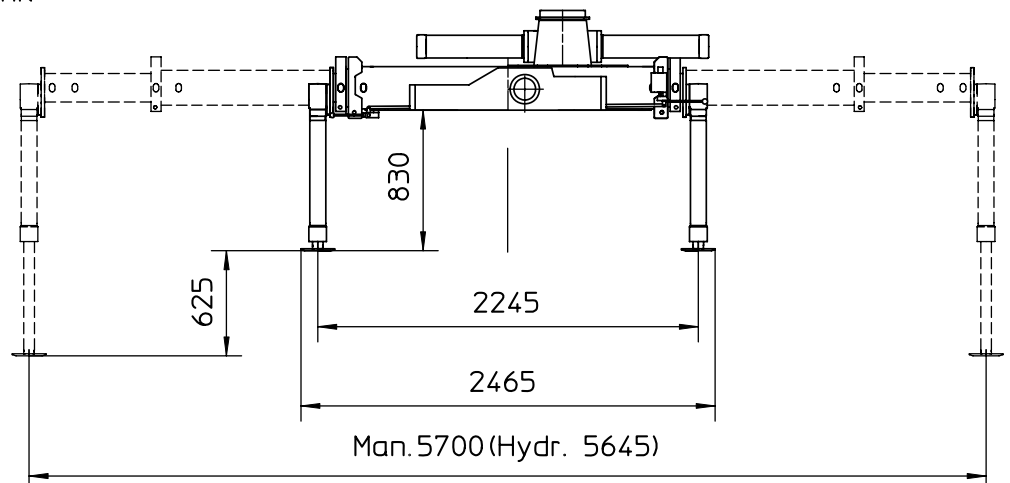
Målskitse, opsv. støtteben, enkelt og dobbelt udtræk
Dimension Sketch, Swing-Up Stab. Single and Double Ext.
Maßskizze, hochschw. Stützbeine, Einzel- und Doppelauszug

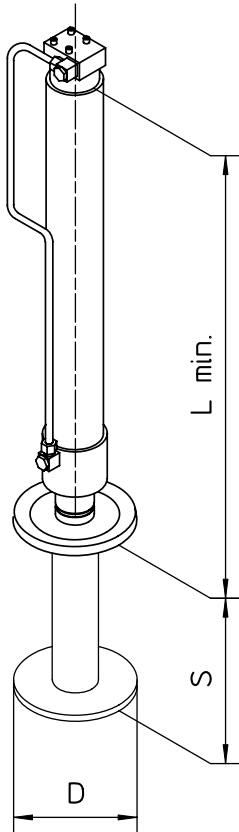
Side:
Page: 1 (1)
Seite:
Date:
Datum: 01.11.96

Opsvingeligt støtteben
Swing-up stabilizer leg
Hochschwenkbare Stützbeine

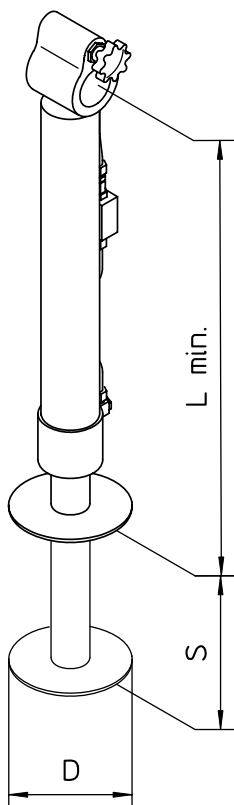


Dobbelt udtræk, opsvingelig
Double Extension, Swing-up
Doppelauszug, Aufswenk

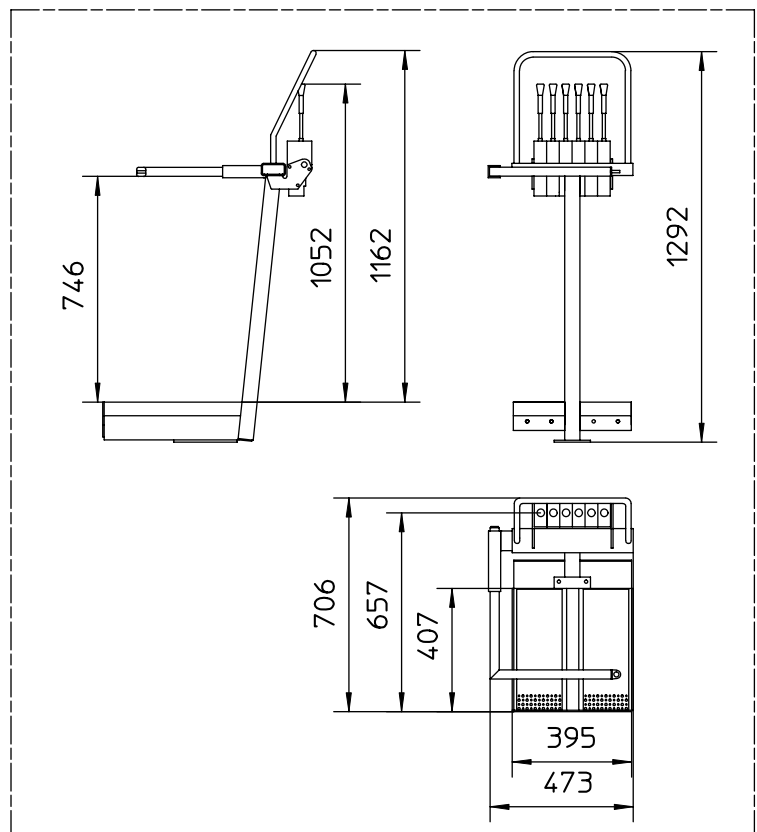
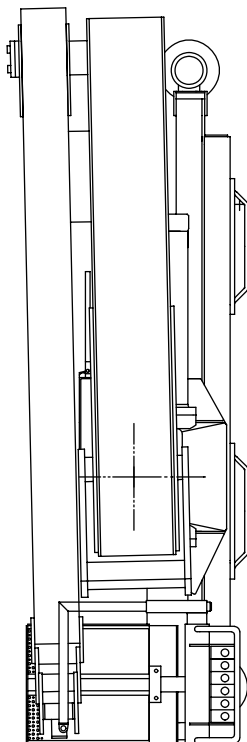
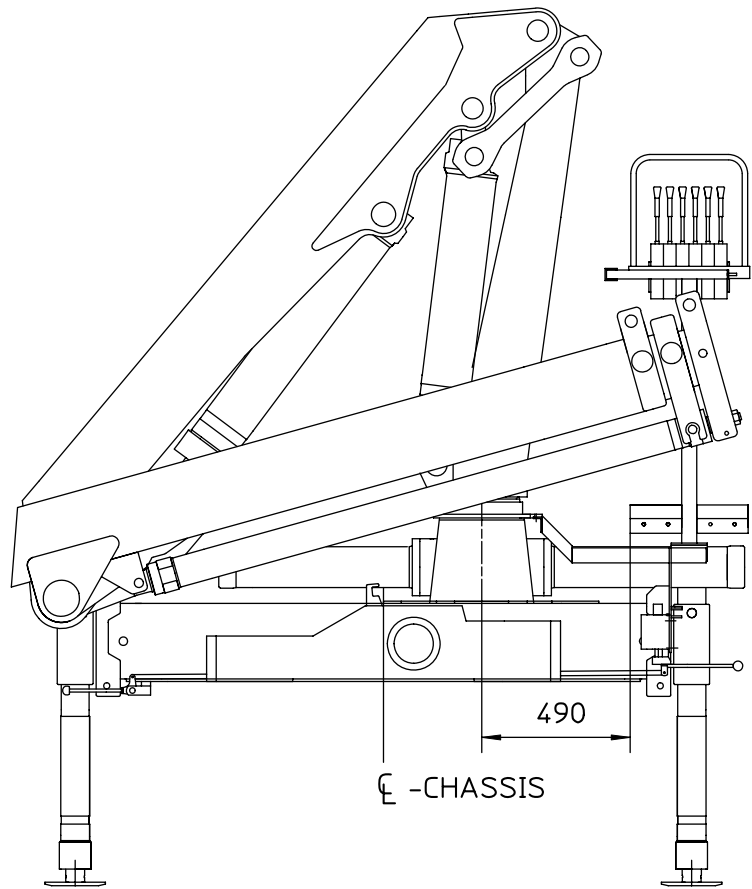
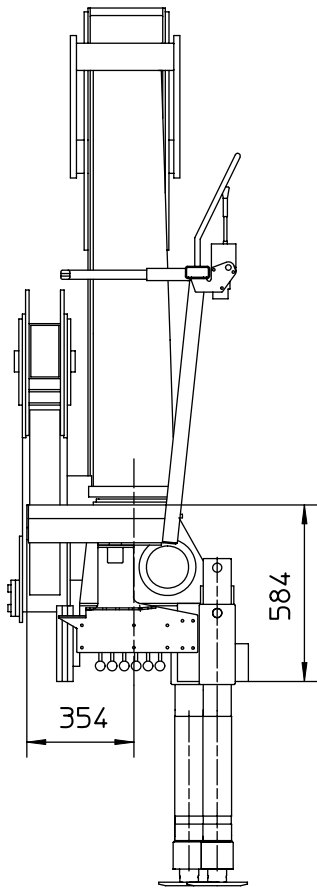


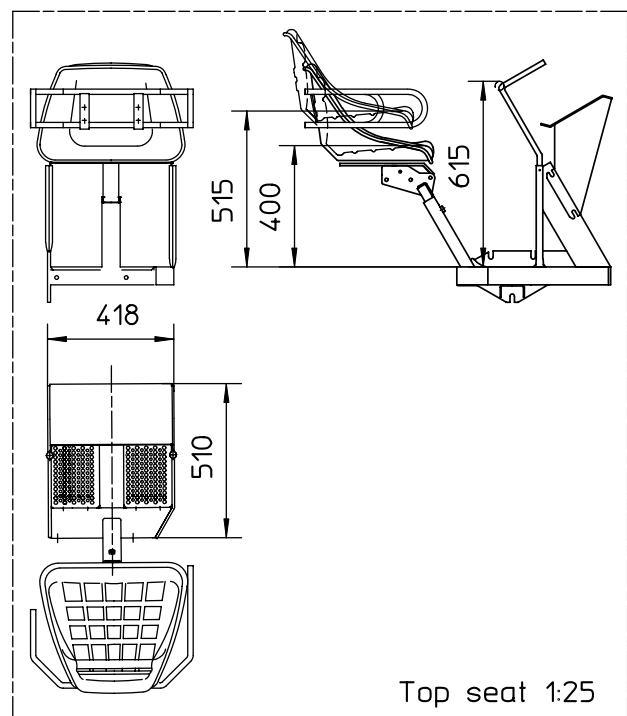
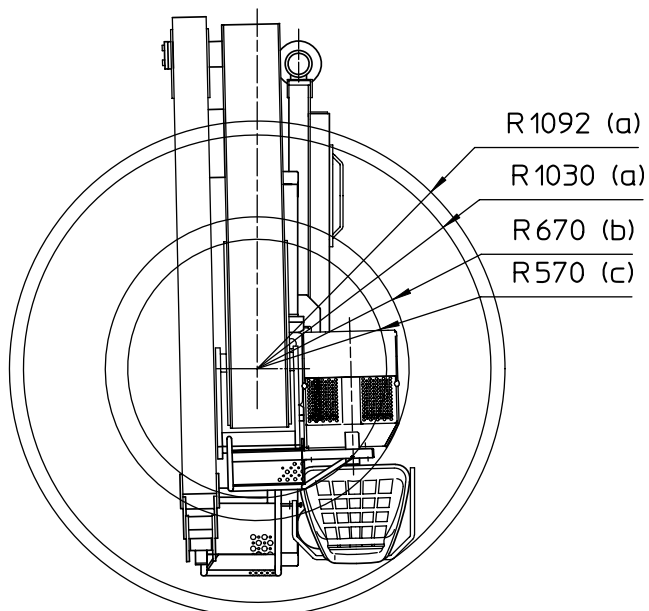
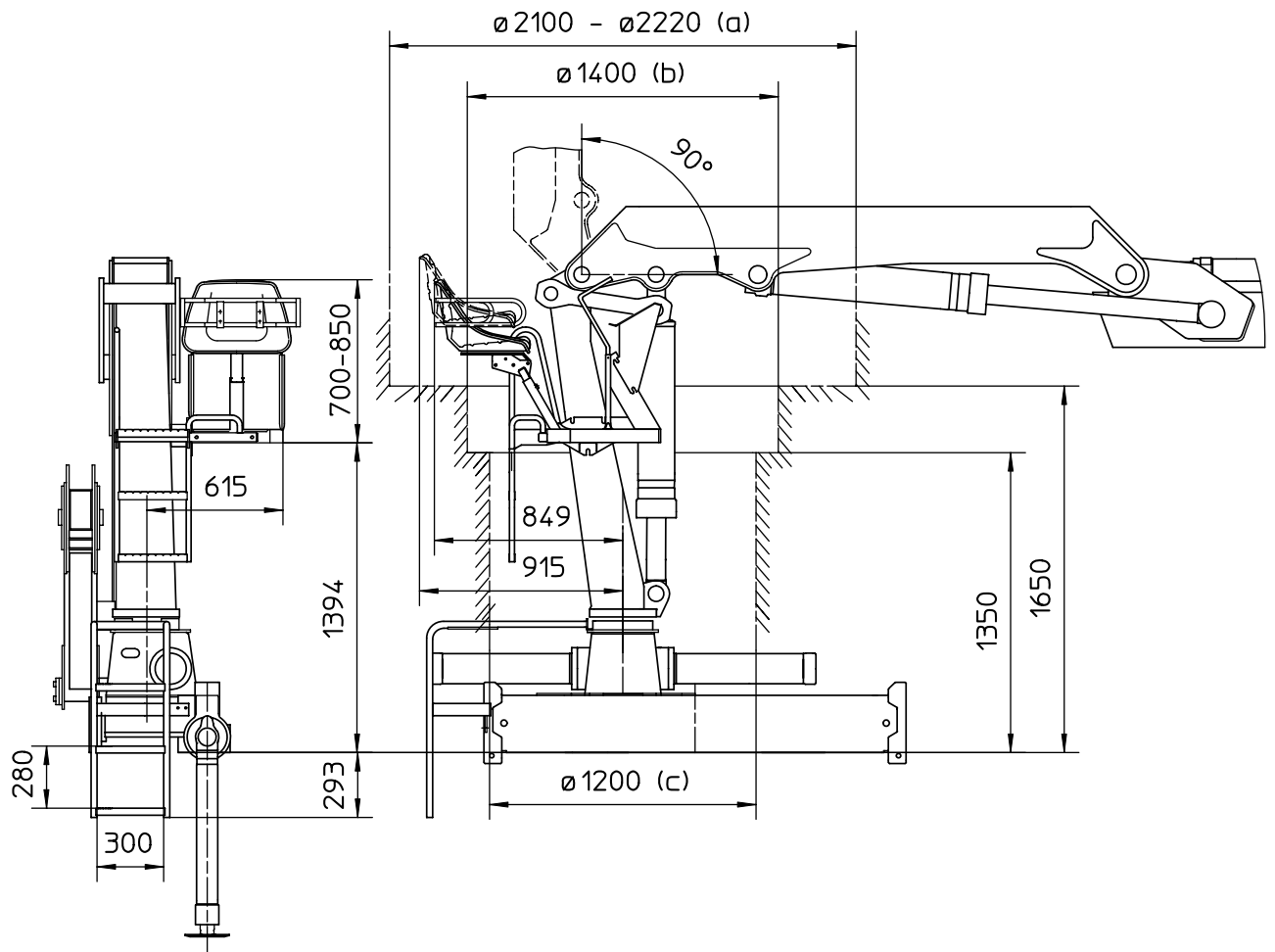


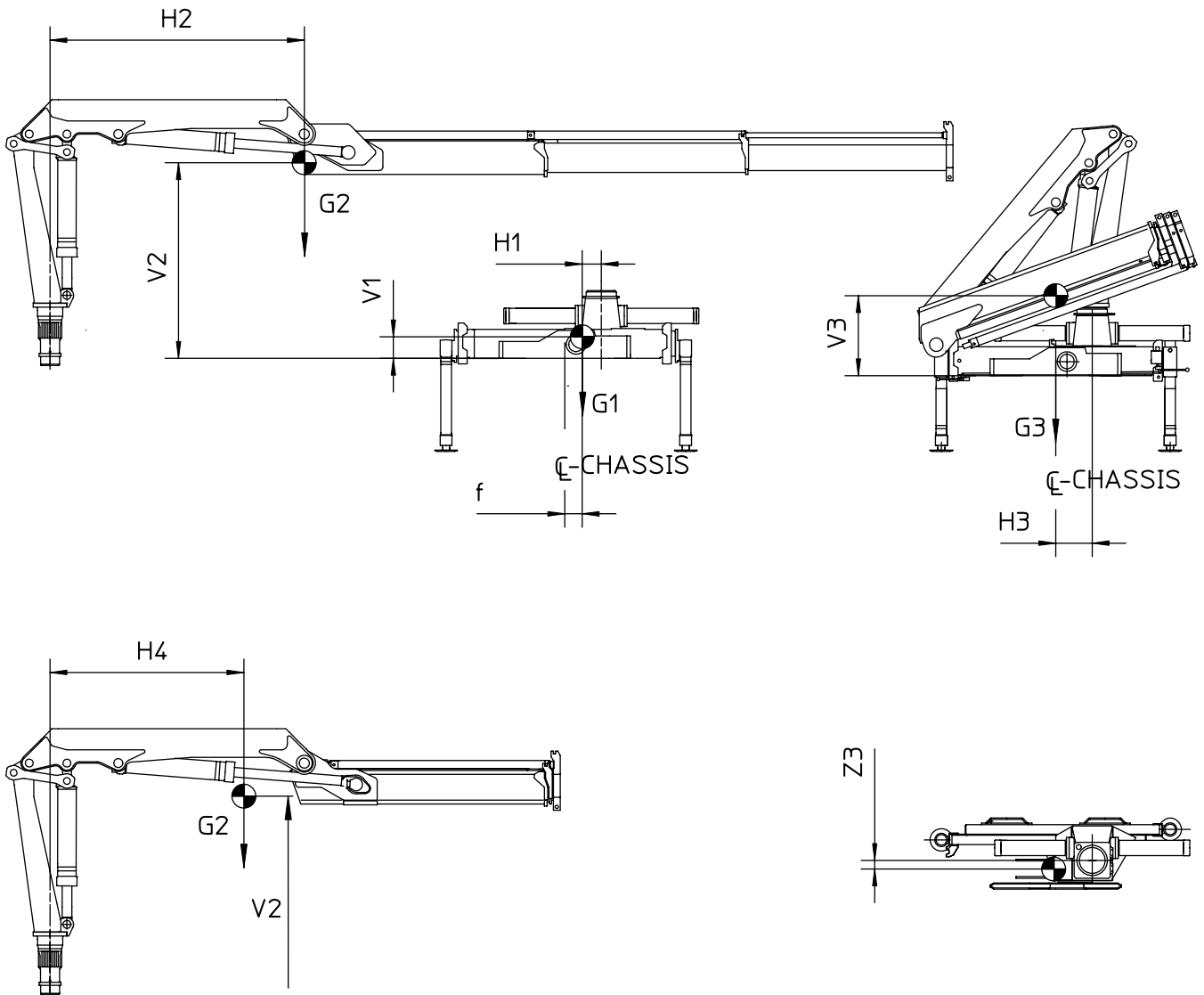
TYPE	V 500	V 625	V 800
No.	62 44 630	62 44 270	62 44 640
L	719	844	1019
S	500	625	800
P max.	10 T	10 T	10 T
D	200	200	200



TYPE		R 625	R 800
No.		62 44 670	62 44 660
L		900	1075
S		625	800
P max.		9 T	9 T
D		200	200





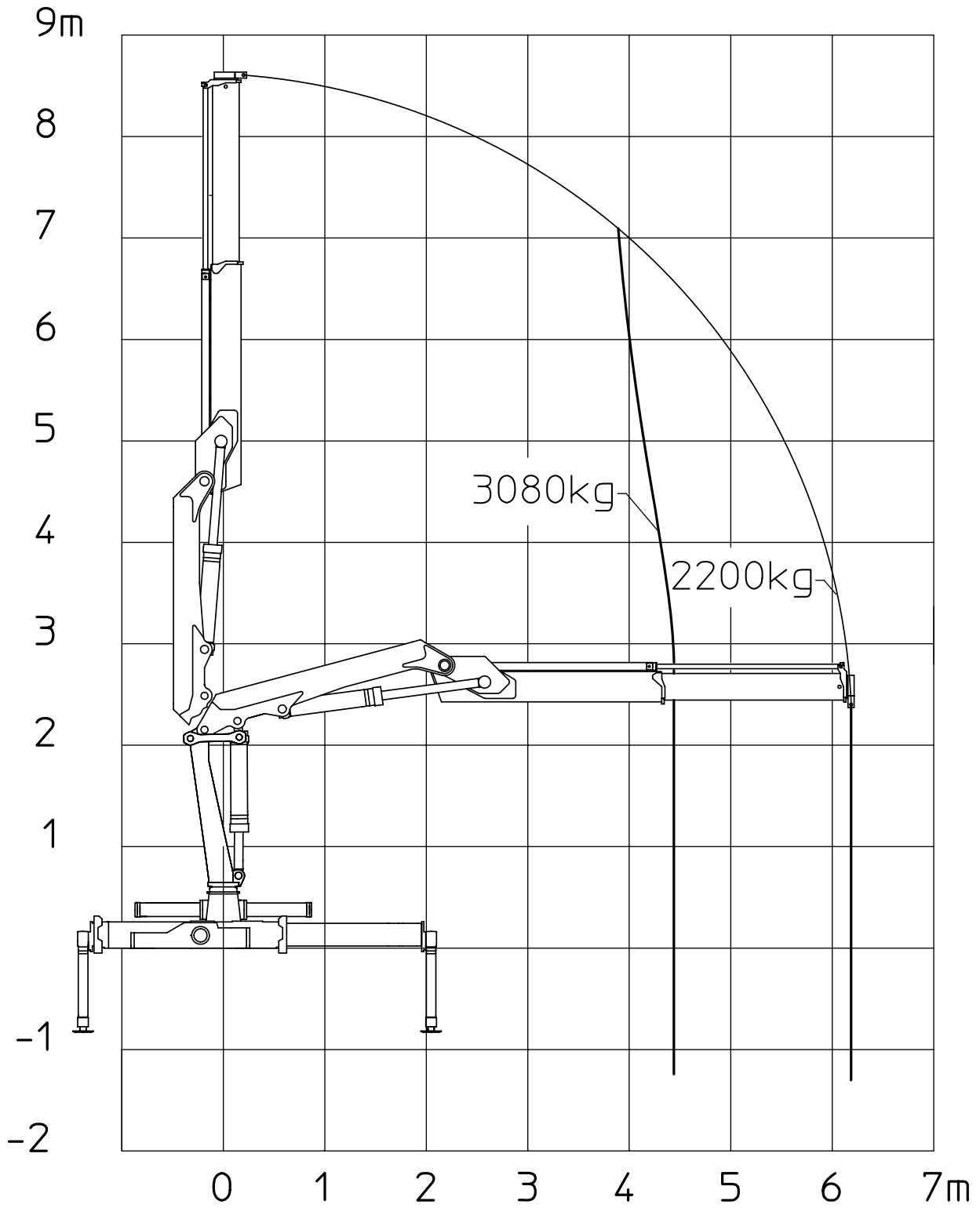


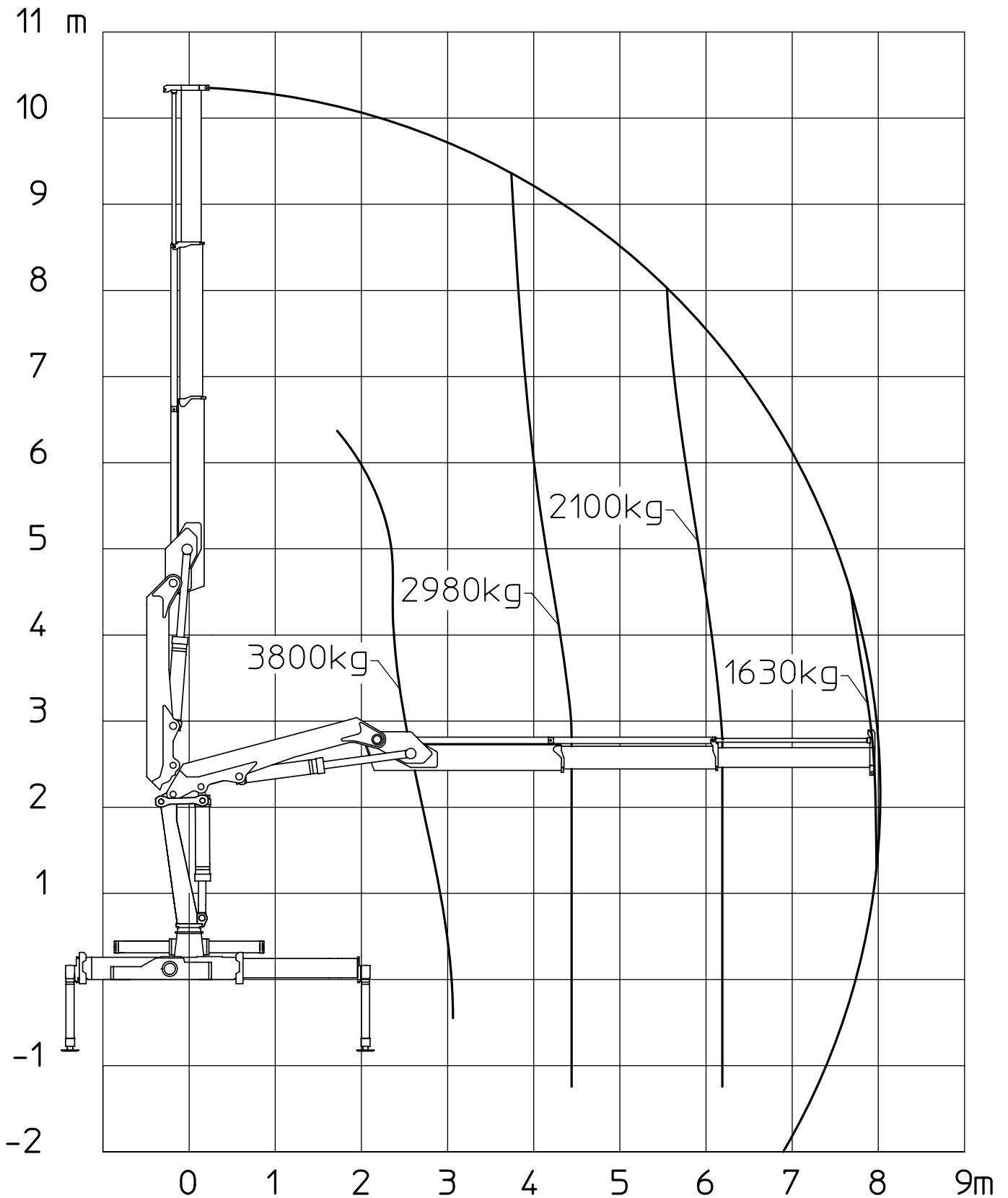
Model	V1	V2	V3	H1	H2	H3	H4	Z3	f	G1	G2	G3
1250 K1	200	1890	680	135	1750	325	1410	15	325	735	995	1730
1250 K2	200	1910	705	135	2210	325	1640	25	325	735	1135	1870
1250 K3	200	1930	715	135	2800	325	1810	40	325	735	1250	1985
1250 K4	200	1945	715	135	3200	325	1930	50	325	735	1355	2090



Performance	Unit	1323-K1	1323-K2	1323-K3	1323-K4
Load moment	tm	13,6	13,1	12,7	12,4
Lifting capacity, hydraulic	kg-m	3080 - 4,4 2200 - 6,2	2980 - 4,4 2100 - 6,2 1630 - 7,9	2830 - 4,5 1970 - 6,3 1500 - 8,0 1210 - 9,9	2700 - 4,6 1850 - 6,4 1390 - 8,1 1100 - 10 920 - 11,8
Working pressure	MPa	29,0	29,0	29,0	29,0

As to the remaining technical Data see Series 1250

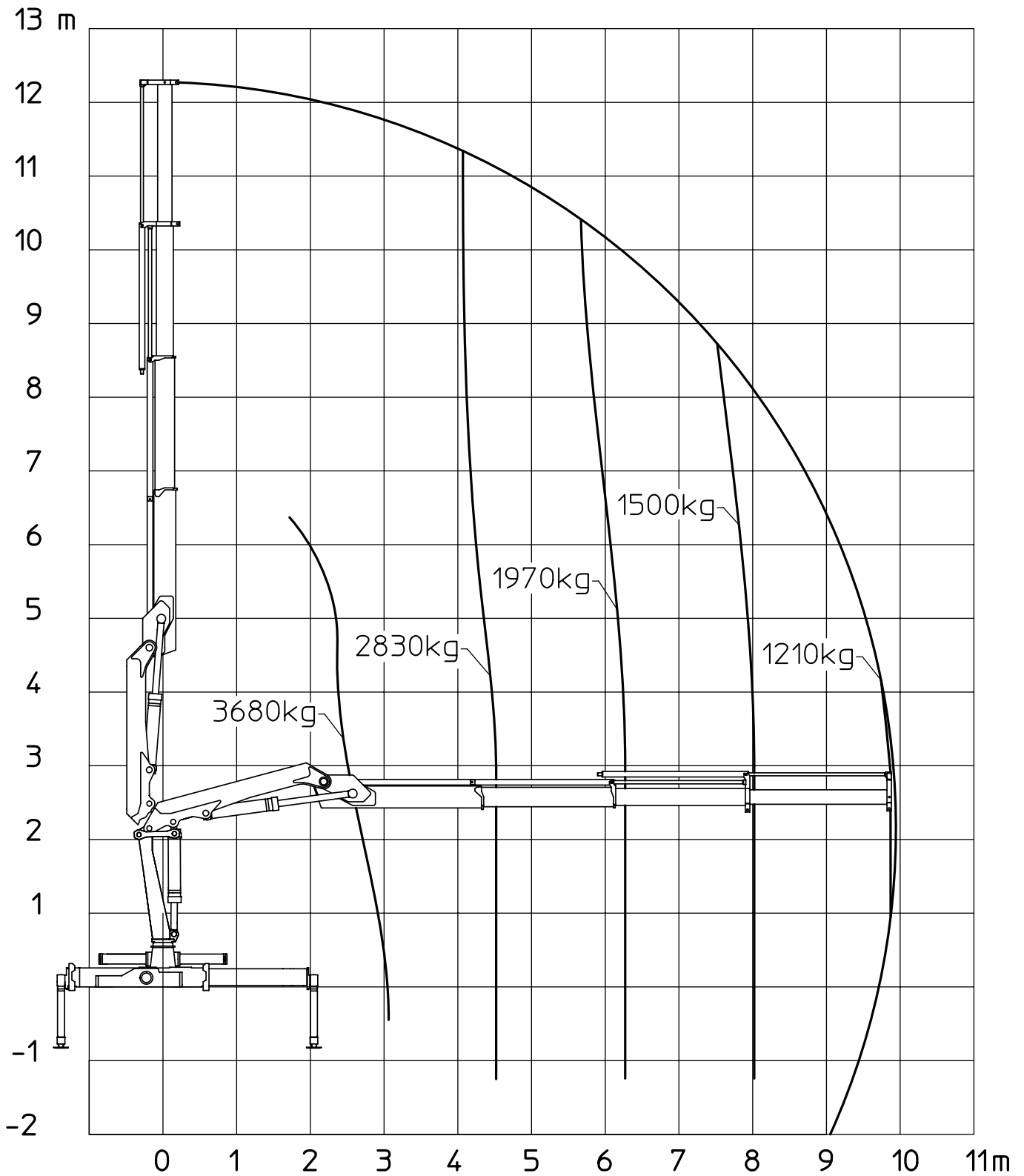


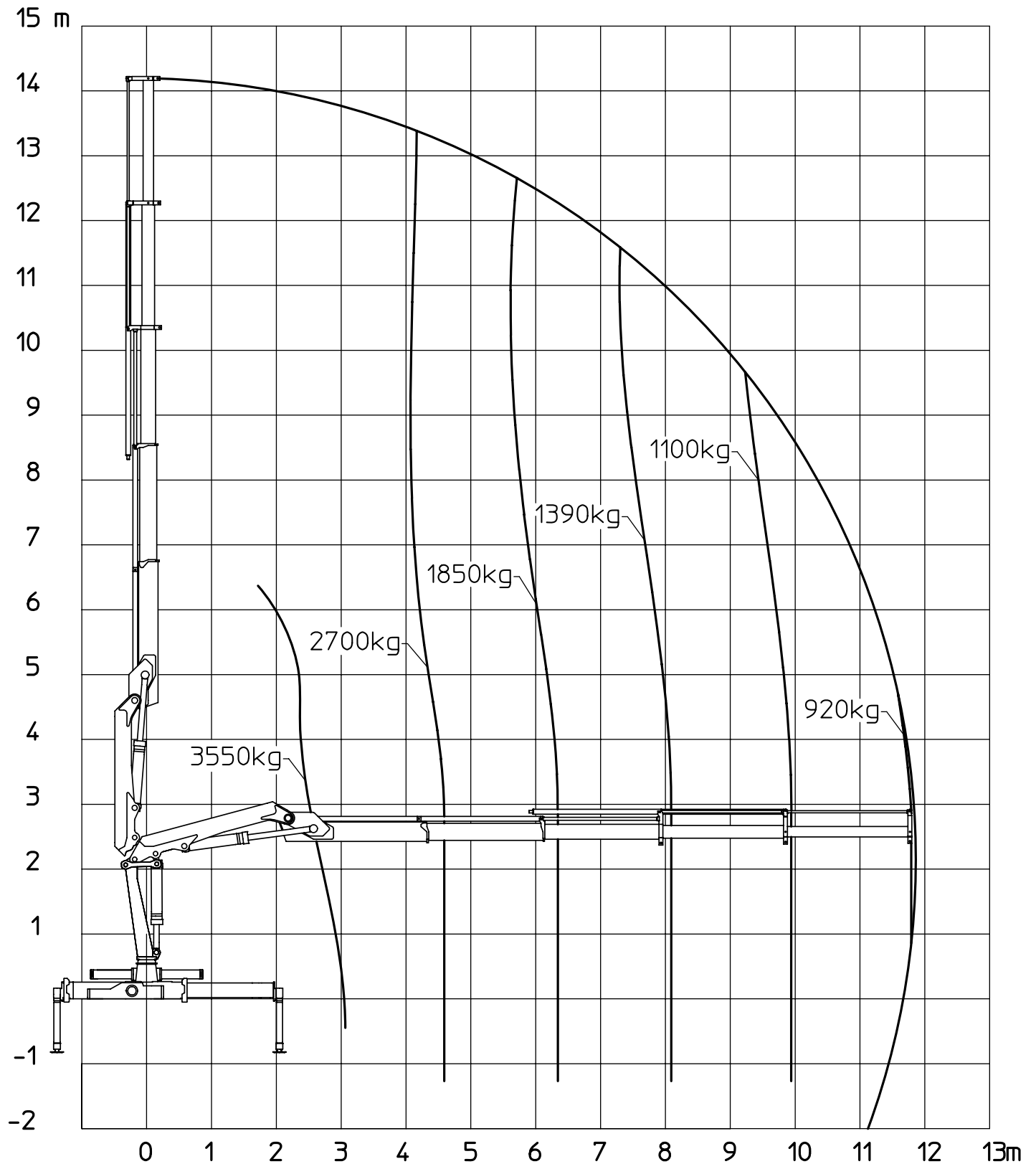




Belastungsdiagram, 1323 K3
Lifting Capacity Diagram, 1323 K3
Belastungsdiagramm, 1323 K3

Side:
Page: 1 (1)
Seite:
Date:
Datum: 01.06.98







TECHNICAL INFORMATION, SERIES 1250

3 1 6336

Løfteevne ved varierende armstillinger, 1253 K2
Lifting Capacity at Various Boom Positions, 1253 K2
Tragkraft bei Verschiedenen Armstellungen, 1253 K2

Side:
Page: 1 (1)
Seite:
Date:
Datum: 01.06.97

